



**SUZUKI**  
**BURGMAN**  
*STREET EX*  
**THE SPECIAL ONE**  
 NOW, MORE SPECIAL THAN EVER.



**WITH**  
**TURN-BY-TURN NAVIGATION.**



Powered by  
**SEP $\alpha$**   
ULTRA LIGHT & ROBUST  
 Ultra light and robust  
 125cc engine

**ENGINE AUTO**  
**STOP START**

**E20**  
 COMPLIANT

Available at  
 Select  
  
 Dealership only

\*Suzuki Ride Connect Application is available for Android™ and iOS both.



**ENGINE AUTO  
STOP-START(EASS)**

The BURGMAN STREET EX is the first Suzuki motorcycle or scooter to adopt our new EASS Stop-Start system, which automatically shuts down the engine to reduce the amount of time the engine idles and then restarts it when the rider turns the throttle to continue riding. This reduces fuel consumption and emissions, so proves particularly beneficial when stopping for traffic lights or when stuck in stop-and-go traffic.



**SILENT STARTER  
SYSTEM**

The new Silent Starter System is also the first on a Suzuki Motorcycle or Scooter. It Starts the scooter smoothly and quietly. The system works in conjunction with the idling stop function of EASS to silently restart the engine when the rider turns the throttle to resume riding.



**12 INCH REAR  
WHEEL (30.48CM)**

The rear wheel size now becomes 12 inch (30.48cm) with 100/80-12 tyre profile. This enhances the look making it wider, bigger and more luxurious. This larger diameter wheel helps in improving the city riding efficiency like while passing gaps on the road. Front Fork and rear suspension are tuned to the tyres and wheels to achieve a fine balance of stability, road-holding performance, nimble handling and a comfortable ride, even when passing over uneven surfaces.



**E20**

**E20 COMPLIANT**

As a part of our effort towards carbon reduction, entire range of Suzuki scooters is now E20 compliant. E20 Fuel type is more environment friendly as its use results in lower carbon emission.



SEP is the development concept behind a new generation of engines proposed by Suzuki that combine both a high level of fuel efficiency and excellent acceleration performance. The new BURGMAN STREET EX further advances this concept by introducing Suzuki Eco Performance Alpha (SEP- $\alpha$ ) engine technology for the first time on a Suzuki scooter or motorcycle. With the addition of Engine Auto Stop-Start (EASS), a new idling stop system, and Suzuki's new Silent Start System, SEP- $\alpha$  distinguishes itself by enhancing the user experience while at the same time achieving a new level of fuel economy and quiet operation.



Suzuki Ride Connect\*  
Edition with Bluetooth®  
Enabled Digital Console



Now, reach your destination without any confusion.  
The big, bold navigation cluster gives you  
Turn-by-Turn directions, keeping you on the right  
route every time.

#### Missed Call Alert & Caller Id^^



Get to know who is calling and view missed calls, without even touching the phone, on the Bluetooth® Enabled Digital Console.

#### Phone Battery Level Display



Phone Battery Level Display so that you never run out of power.

#### Speed Exceeding Alert



Set a speed limit on your Suzuki Ride Connect app and get an alert whenever you exceed that limit.

#### Turn-by-Turn Navigation



Big and Bold Turn-by-Turn Navigation icon display so that you never go off track from your destination.

#### Call, SMS & WhatsApp Alert



LCD and LED Blinking + Notification display on cluster.

#### ETA Updates



Estimated Time of Arrival display for never being late to your destination.

## FEATURES



USB SOCKET



FRONT DISC BRAKE



LUXURIOUS LED HEADLIGHTS AND POSITION LIGHTS



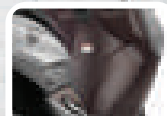
LED REAR COMBINATION LIGHT



COMPACT BODY MOUNT WINDSCREEN



SPORTY MUFFLER COVER



FLEXIBLE FOOT POSITION FOR RIDER



21.5 L UNDER SEAT STORAGE



2L GLOVE BOX & RACK FOR STORAGE



CONVENIENT DUAL LUGGAGE HOOKS



SHUTTER KEY WITH CENTRAL SEAT LOCK



ALUMINIUM PILLION FOOTREST



SIDE STAND INTERLOCK



DUAL TONE SEAT COLOR

## GENUINE ACCESSORIES^



REAR FOOTREST SIDE



ACCESSORY BAR



SEAT COVER

^Genuine Accessories are not a part of standard equipment. ^^Missed Call Alert & Caller ID feature is available in Android™ OS only.  
\*Suzuki Ride Connect Application is available for Android™ and iOS both.





# SUZUKI

## BURGMAN

### STREET EX

#### BURGMAN STREET EX COLOR VARIANTS



**Metallic Matte Platinum Silver No.2 - SAB**



**Metallic Royal Bronze - QS4**

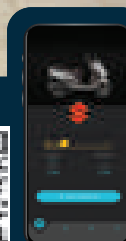


**Metallic Matte Black No.2 - YKV**

\*Scan this QR code to download Suzuki Ride Connect Android™ Application



\*Scan this QR code to download Suzuki Ride Connect iOS Application



#### UNIQUE APP FEATURES



WhatsApp Notification



Short Distance Indicator Bar



Bold TBT Icons

#### ENGINE

Type :	4-Stroke, 1-Cylinder, Air-Cooled
Valve System:	SOHC, 2 Valve
Displacement:	124 cm <sup>3</sup>
Bore x Stroke:	52.5 x 57.4 mm
Engine Output:	8.6ps @ 6 500 rpm
Torque:	10.0Nm @ 5 500 rpm
Fuel System:	Fuel Injection
Starter System:	Kick and Electric
Transmission Type:	CVT

#### DIMENSIONS AND WEIGHT

Overall Length:	1 875 mm
Overall Width:	700 mm
Overall Height:	1 140 mm
Wheelbase:	1 290 mm
Ground Clearance:	160 mm
Seat Height:	780 mm
Kerb Mass:	111 kg
Wheels:	Alloy
Fuel Tank:	5.5 L

#### BRAKE

Front:	Disc
Rear:	Drum

#### SUSPENSION

Front:	Telescopic
Rear:	Swing Arm

#### TYRE SIZE

Front:	90/90-12 54J Tubeless
Rear:	100/80-12 56J Tubeless

#### ELECTRICAL

Battery:	12V, 6Ah
Headlight:	LED

Authorised Dealer

Visit us at: [www.suzukimotorcycle.co.in](http://www.suzukimotorcycle.co.in) [/suzuki2wheelers](https://www.facebook.com/suzuki2wheelers) [YouTube /suzuki2wheelers](https://www.youtube.com/channel/UCsuzuki2wheelers) [/suzuki2wheelers](https://www.instagram.com/suzuki2wheelers) [/suzuki2wheelers](https://www.tiktok.com/@suzuki2wheelers)

**Regd. Office, Sales & Marketing Office:** 2nd Floor, Plot No. 1, Nelson Mandela Road, Vasant Kunj, New Delhi - 110070 CIN - (U74899DL199FTC086871) Fax: +91-11-46075418 [www.suzukimotorcycle.in](http://www.suzukimotorcycle.in) | For further information call (Toll-Free): 1800-121-7996 (Mon-Sat from 9:00 am to 6:00 pm)

Ride safe. Wear a helmet.

We reserve the right to make changes at any point of time, without prior notice in design, colour, specifications and features of product. All items/ products shown above may be indicative only and may vary in actual. Colours shown may vary from actually body colour of the product due to printing. Accessories shown in the pictures are not a part of the standard product. For the latest authentic information, kindly contact your nearest Authorized Dealer. Suzuki Ride Connect Application is available for Android™ OS Version 6 onwards. Android is a trademark of Google LLC. \*Suzuki ride connect application is available for iOS version 12.0 onwards. IOS is a trademark or registered trademark of Cisco in the U.S. and other countries and is used under license. \*\*Missed call alert and caller ID feature is available in Android™ OS only. The Bluetooth® word mark and logos are registered trademarks owned by Bluetooth SIG, Inc. and any use of such marks by Suzuki is under license. ^Genuine Accessories are not a part of standard equipment.

Please scan this QR code to visit our website



##Including 3 Years optional warranty.

\*\*Extended warranty is offered by third party.